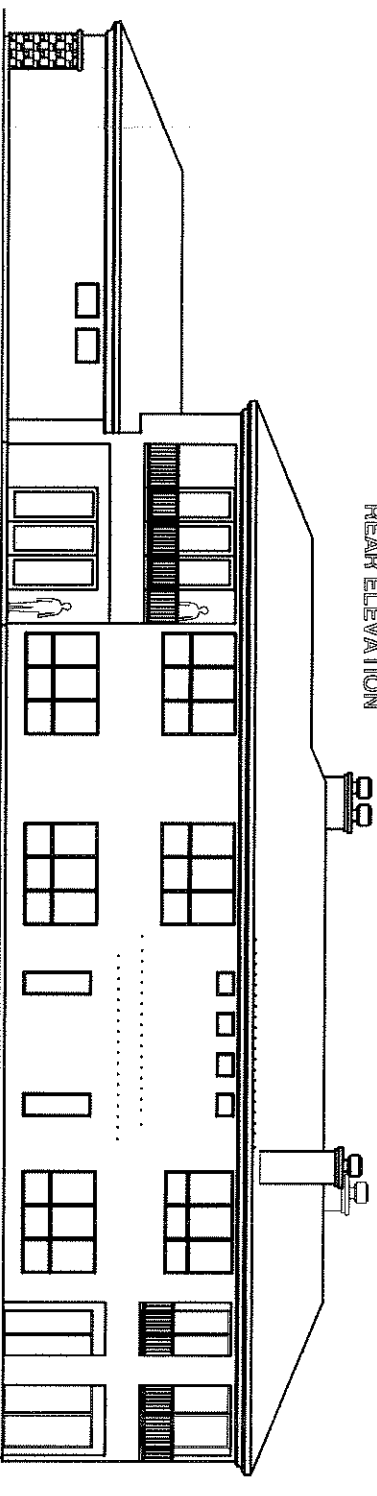
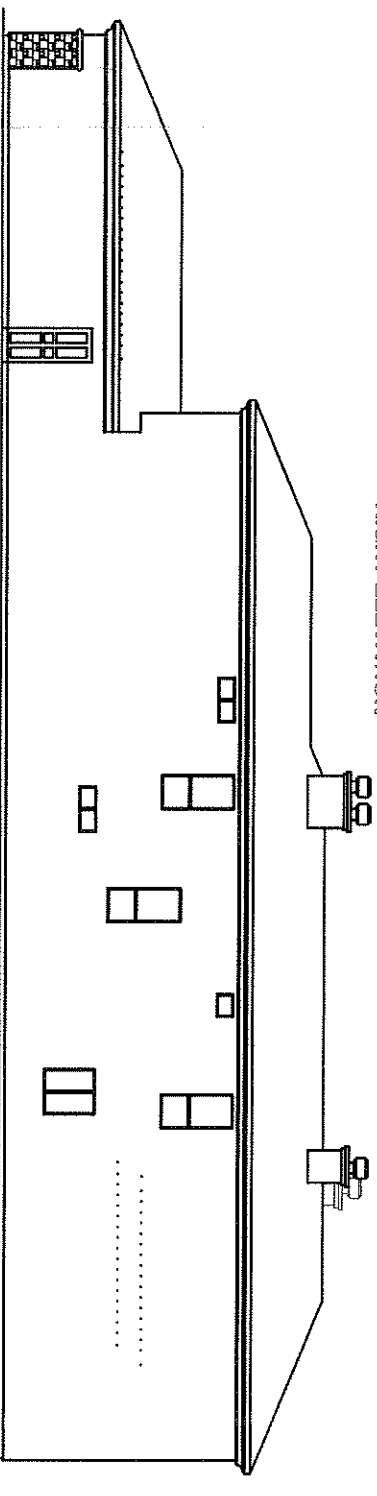


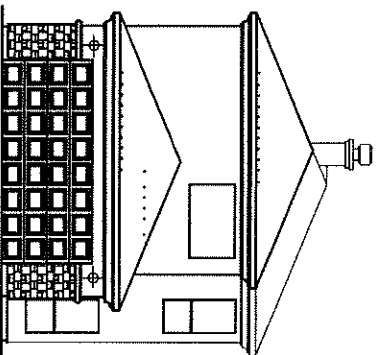
REAR ELEVATION



RIGHT ELEVATION



LEFT ELEVATION

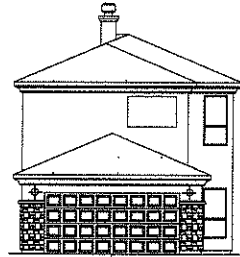
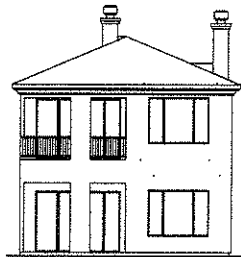
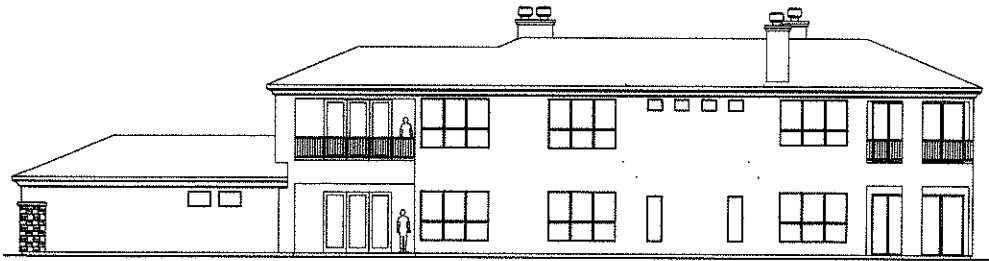
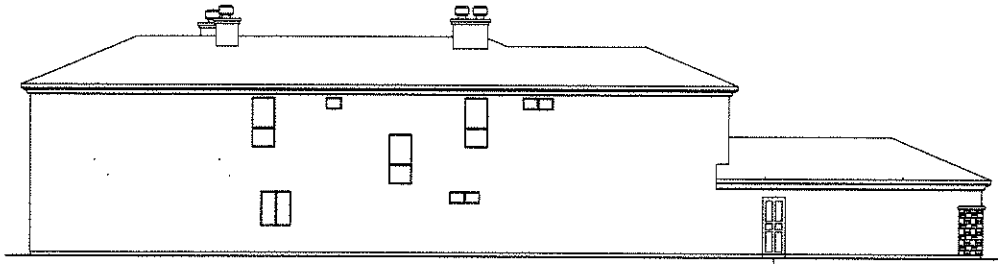


FRONT ELEVATION

LOT 58 MARINA VILLAS

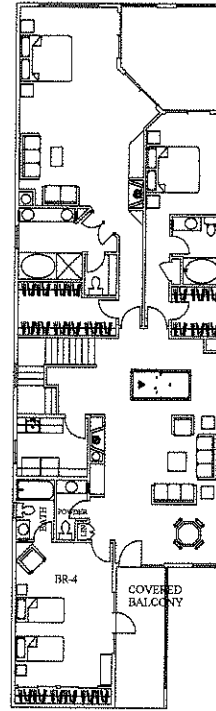
PRELIMINARY DRAWINGS NOT FOR CONSTRUCTION
PLANS ARE SUBJECT TO CHANGE

BULLHEAD CITY, ARIZONA
JAN 15, 2008

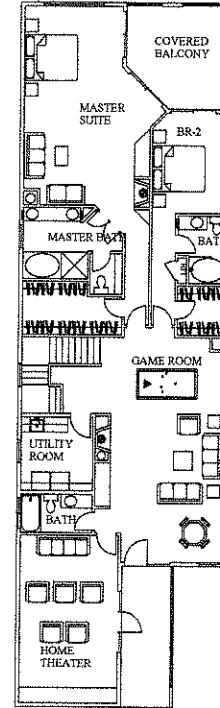


AREAS	
FIRST FLOOR	2152 SF
SECOND FLOOR	2152 SF
	4304 SF TOTAL
COVERED PATIO	180 SF
COVERED BALCONY	180 SF
FRONT ENTRY	127 SF
FRONT BALCONY	127 SF
GARAGE	809 SF

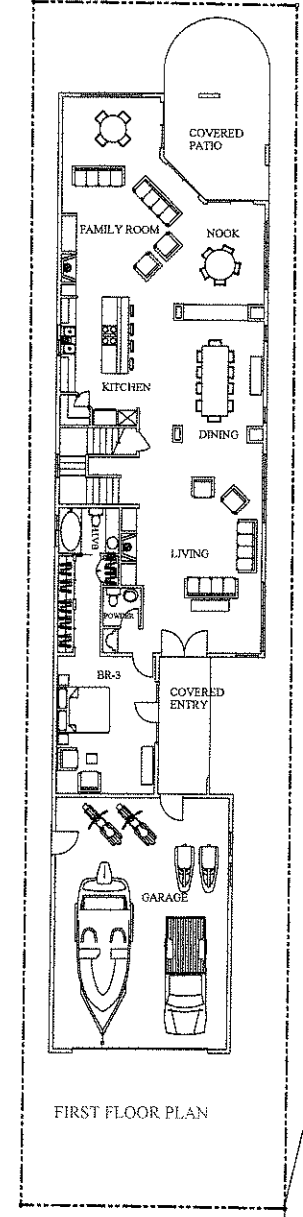
LOT 58
 SCALE: 1/8"=1'-0"
MARINA VILLAS
 PRELIMINARY DRAWINGS NOT FOR CONSTRUCTION
 PLANS ARE SUBJECT TO CHANGE



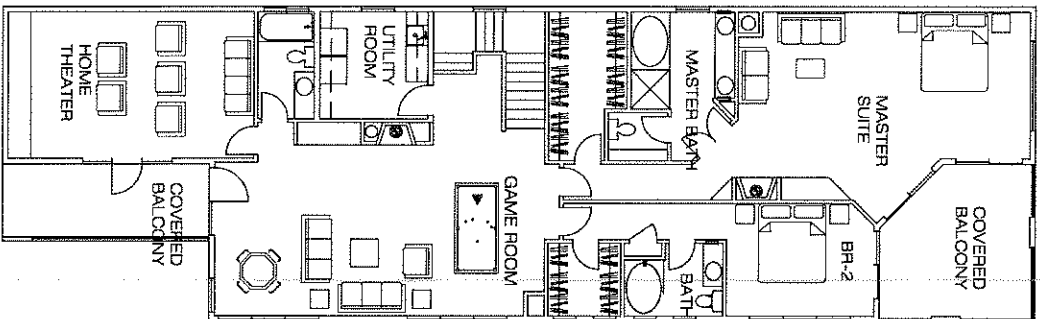
SECOND FLOOR PLAN
 SHOWING OPTIONAL BR-4



SECOND FLOOR PLAN

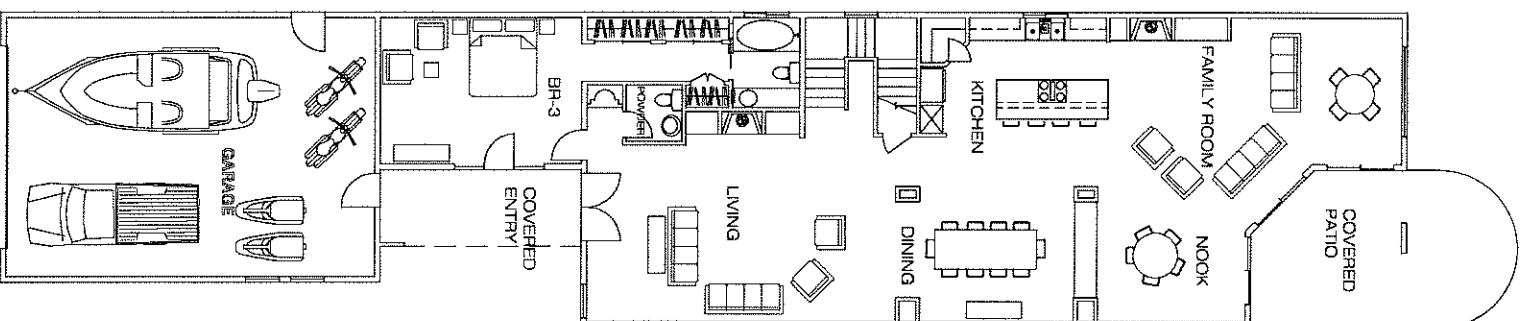


FIRST FLOOR PLAN



SECOND FLOOR PLAN

AREAS	
FIRST FLOOR	2152 SF
SECOND FLOOR	2152 SF
4304 SF TOTAL	
COVERED PATIO	180 SF
COVERED BALCONY	180 SF
FRONT ENTRY	127 SF
FRONT BALCONY	127 SF
GARAGE	809 SF

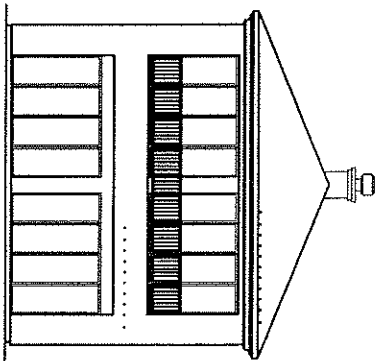


FIRST FLOOR PLAN

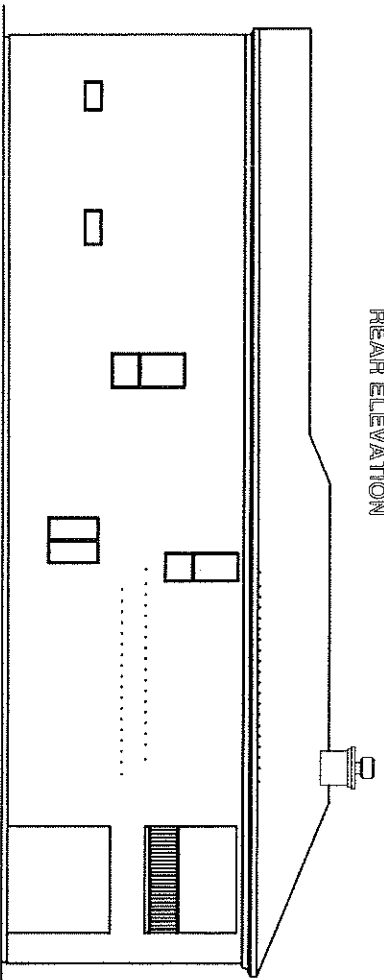
LOT 58 MARINA VILLAS

PRELIMINARY DRAWINGS NOT FOR CONSTRUCTION
PLANS ARE SUBJECT TO CHANGE

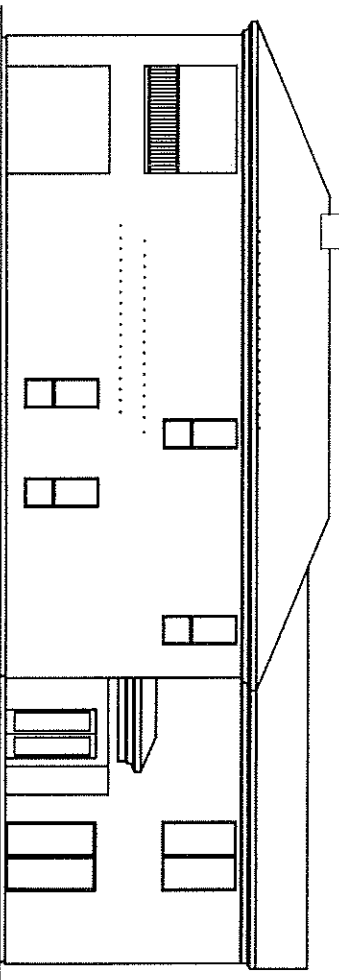
BULLHEAD CITY, ARIZONA
JAN 15, 2008



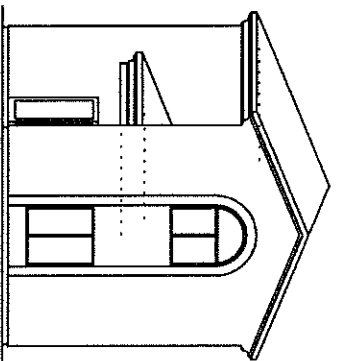
REAR ELEVATION



RIGHT ELEVATION



LEFT ELEVATION

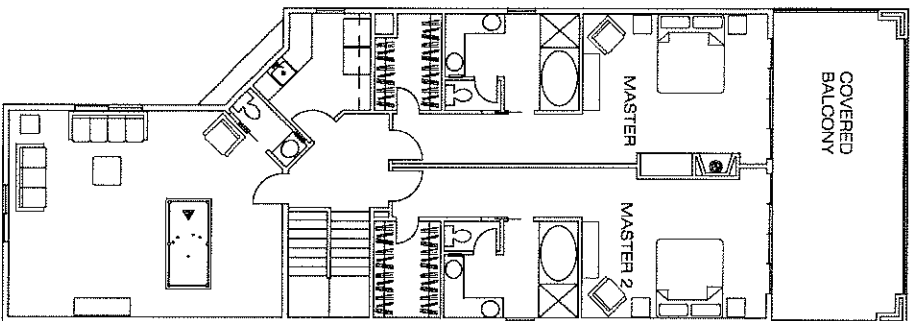


FRONT ELEVATION

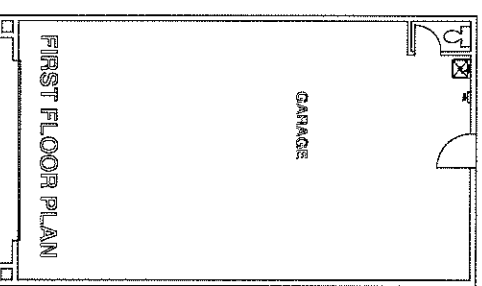
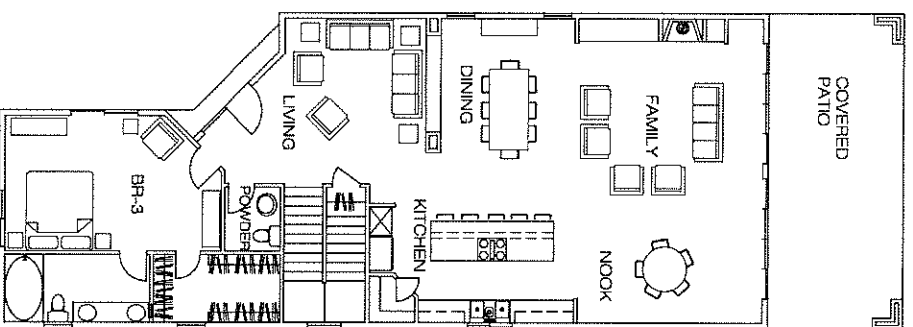
LOT 59 MARINA VILLAS

PRELIMINARY DRAWINGS NOT FOR CONSTRUCTION
PLANS ARE SUBJECT TO CHANGE

BULLHEAD CITY, ARIZONA
JAN 15, 2008



SECOND FLOOR PLAN



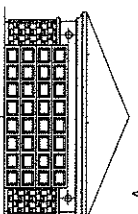
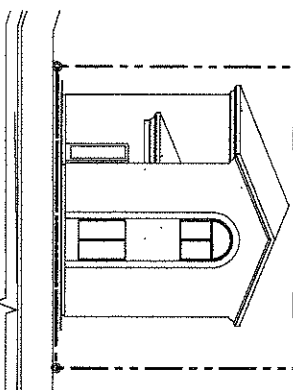
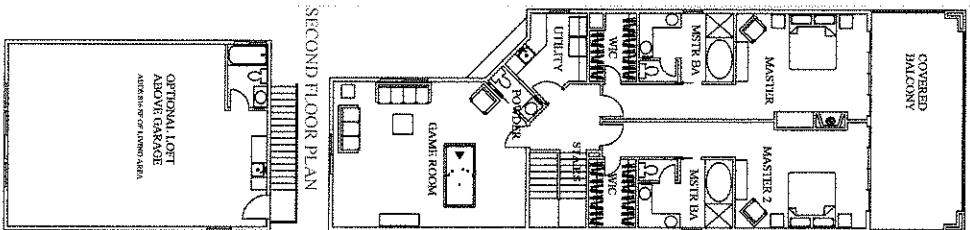
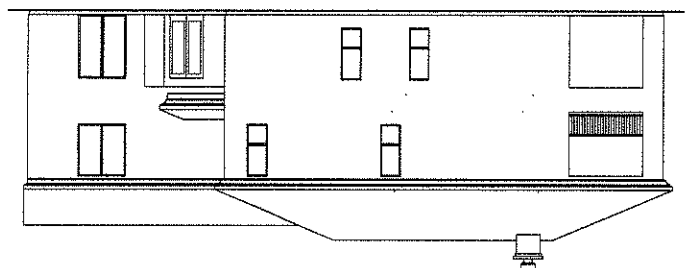
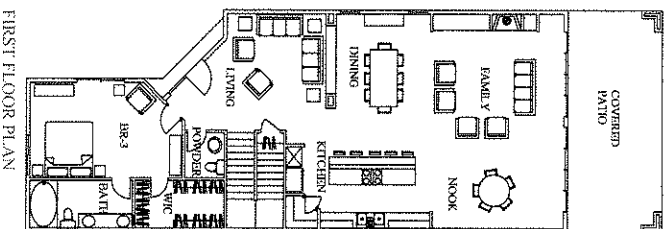
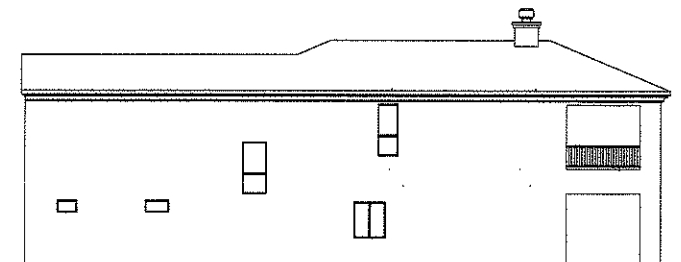
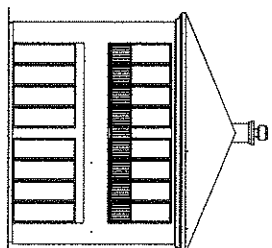
FIRST FLOOR PLAN

AREAS	
FIRST FLOOR	1722 SF
SECOND FLOOR	1729 SF
	<u>3451</u>
COVERED PATIO	256 SF
COVERED BALCONY	256 SF
GARAGE	806 SF

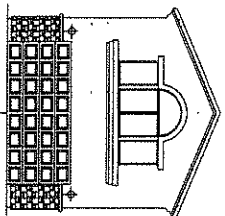
LOT 59 MARINA VILLAS

PRELIMINARY DRAWINGS NOT FOR CONSTRUCTION
PLANS ARE SUBJECT TO CHANGE

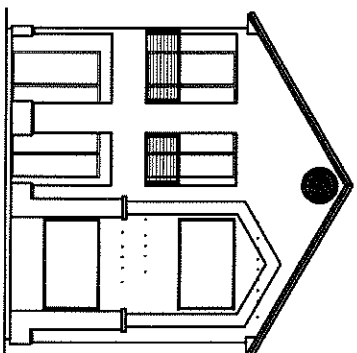
BULLHEAD CITY, ARIZONA
JAN 15, 2008



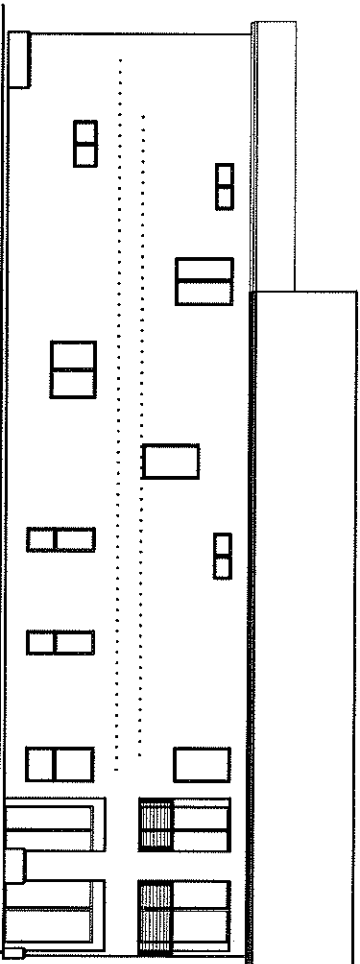
AREAS	
FIRST FLOOR	1722 SF
SECOND FLOOR	1729 SF
COVERED PATIO	3451 SF TOTAL
COVERED BALCONY	236 SF
GARAGE	236 SF
	806 SF



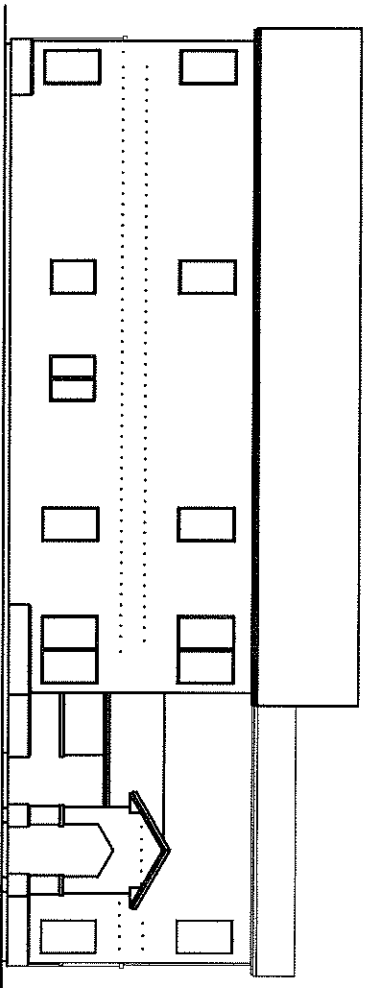
LOT 59
SCALE 1/8"=1'-0"
MARINA VILLAS



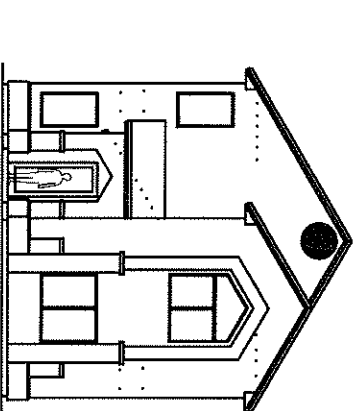
REAR ELEVATION



RIGHT ELEVATION



LEFT ELEVATION



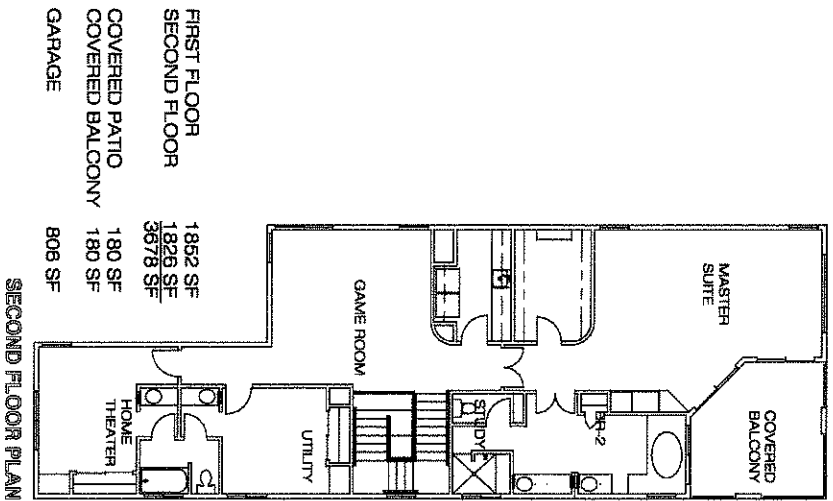
FRONT ELEVATION

LOT 63

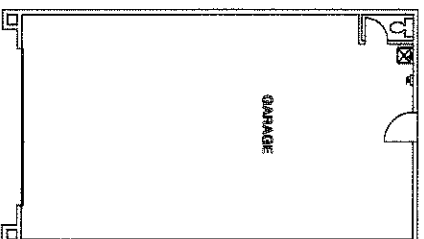
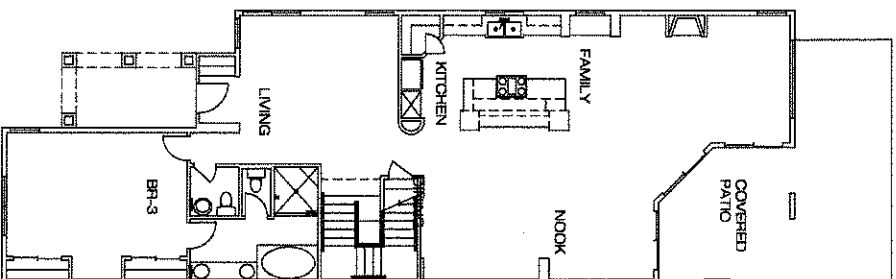
MARINA VILLAS

PRELIMINARY DRAWINGS NOT FOR CONSTRUCTION
PLANS ARE SUBJECT TO CHANGE

BULLHEAD CITY, ARIZONA
JAN 15, 2008



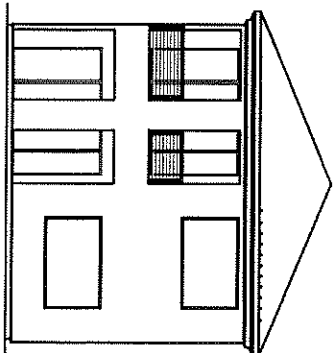
FIRST FLOOR 1862 SF
SECOND FLOOR 1826 SF
COVERED PATIO 3678 SF
COVERED BALCONY 180 SF
GARAGE 808 SF



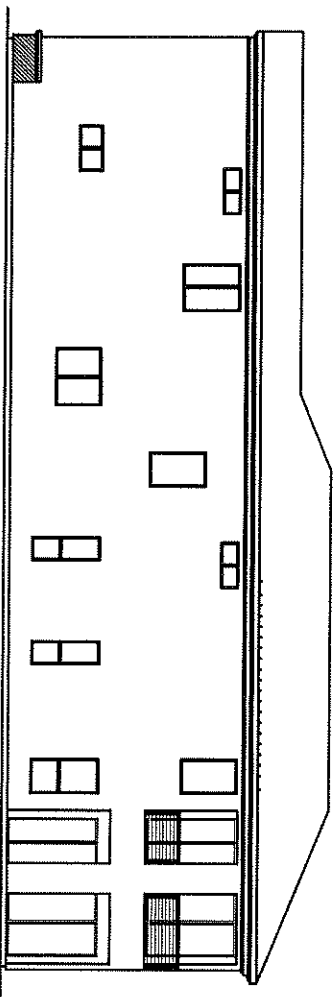
LOT 63 MARINA VILLAS

PRELIMINARY DRAWINGS NOT FOR CONSTRUCTION
PLANS ARE SUBJECT TO CHANGE

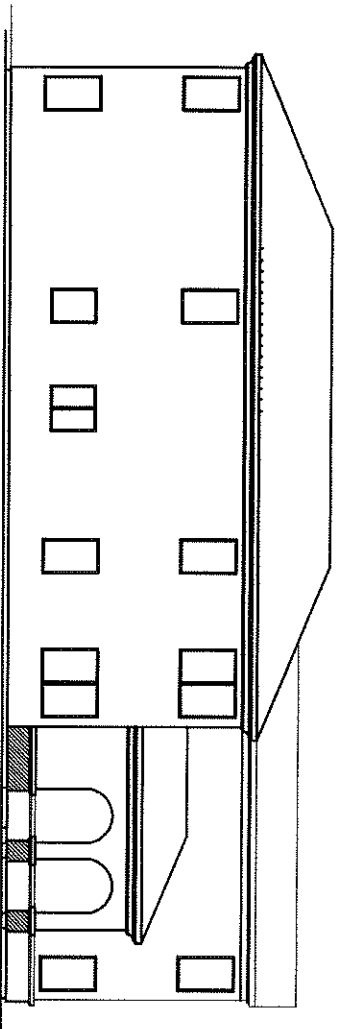
BULLHEAD CITY, ARIZONA
JAN 15, 2008



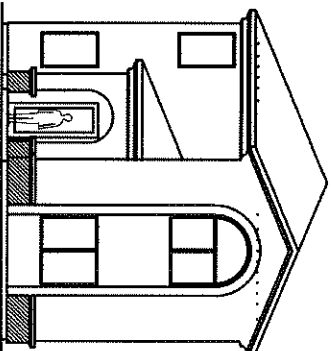
REAR ELEVATION



RIGHT ELEVATION



LEFT ELEVATION



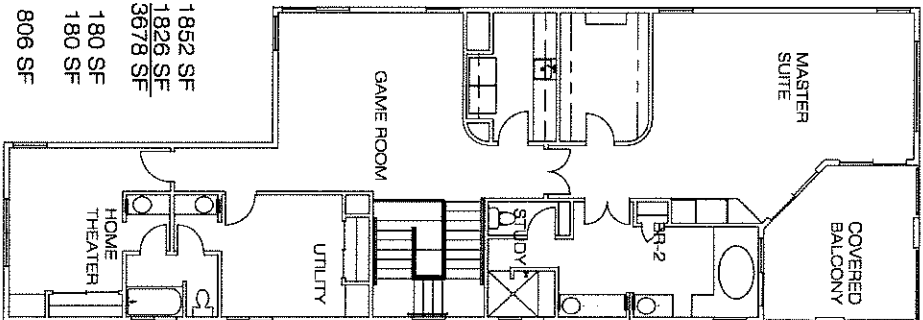
FRONT ELEVATION

LOT 64

MARINA VILLAS

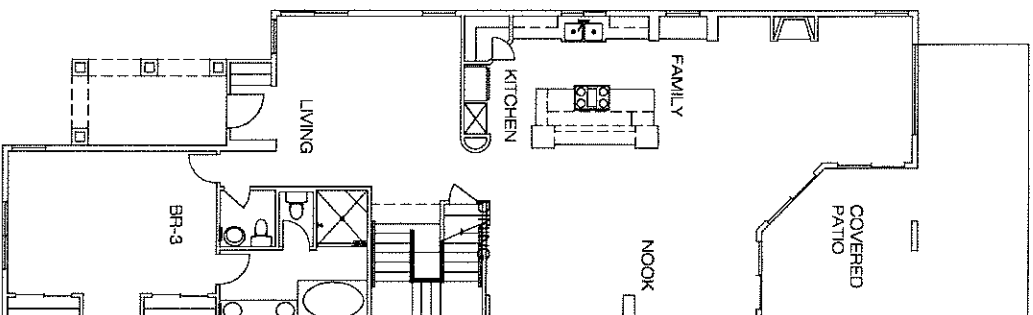
PRELIMINARY DRAWINGS NOT FOR CONSTRUCTION
PLANS ARE SUBJECT TO CHANGE

BULLHEAD CITY, ARIZONA
JAN 15, 2008

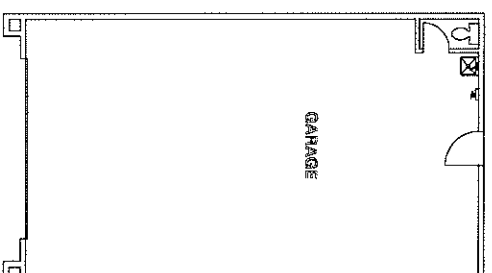


AREAS
 FIRST FLOOR
 SECOND FLOOR
 COVERED PATIO
 COVERED BALCONY
 GARAGE

SECOND FLOOR PLAN



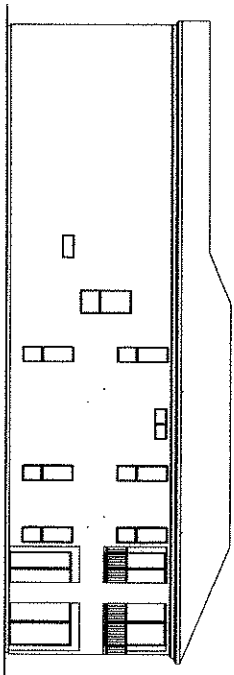
FIRST FLOOR PLAN



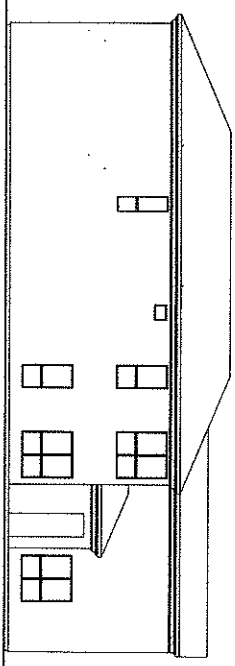
LOT 64 MARINA VILLAS

PRELIMINARY DRAWINGS NOT FOR CONSTRUCTION
 PLANS ARE SUBJECT TO CHANGE

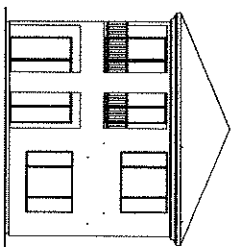
BULLHEAD CITY, ARIZONA
 JAN 15, 2008



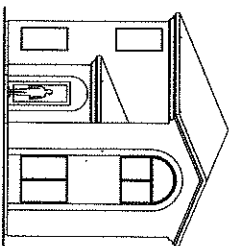
RIGHT ELEVATION



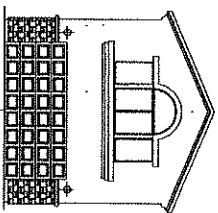
LEFT ELEVATION



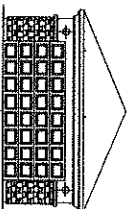
REAR ELEVATION



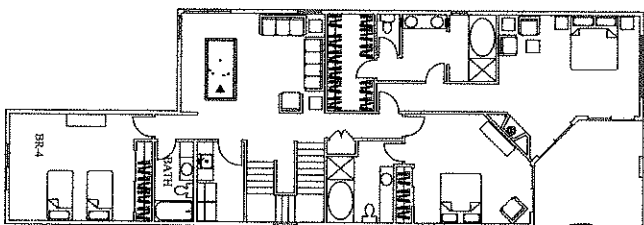
FRONT ELEVATION



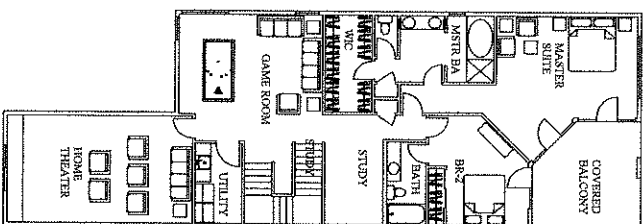
FRONT ELEVATION
TWO STORY GARAGE



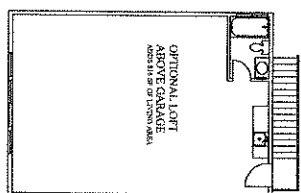
FRONT ELEVATION
ONE STORY GARAGE



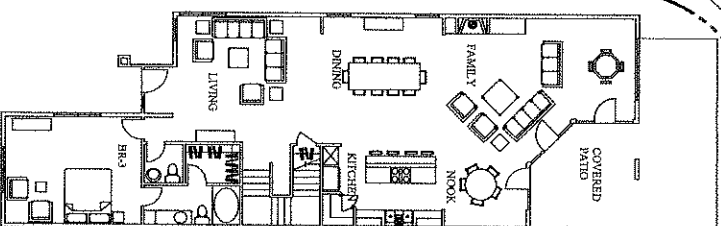
SECOND FLOOR PLAN
SHOWING OPTIONAL BR-4



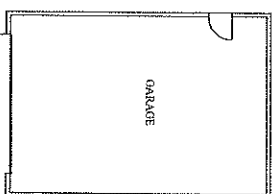
SECOND FLOOR PLAN



OPTIONAL LOFT
ABOVE GARAGE
AREA IS 14' x 17'00" MAX.



FIRST FLOOR PLAN



GARAGE

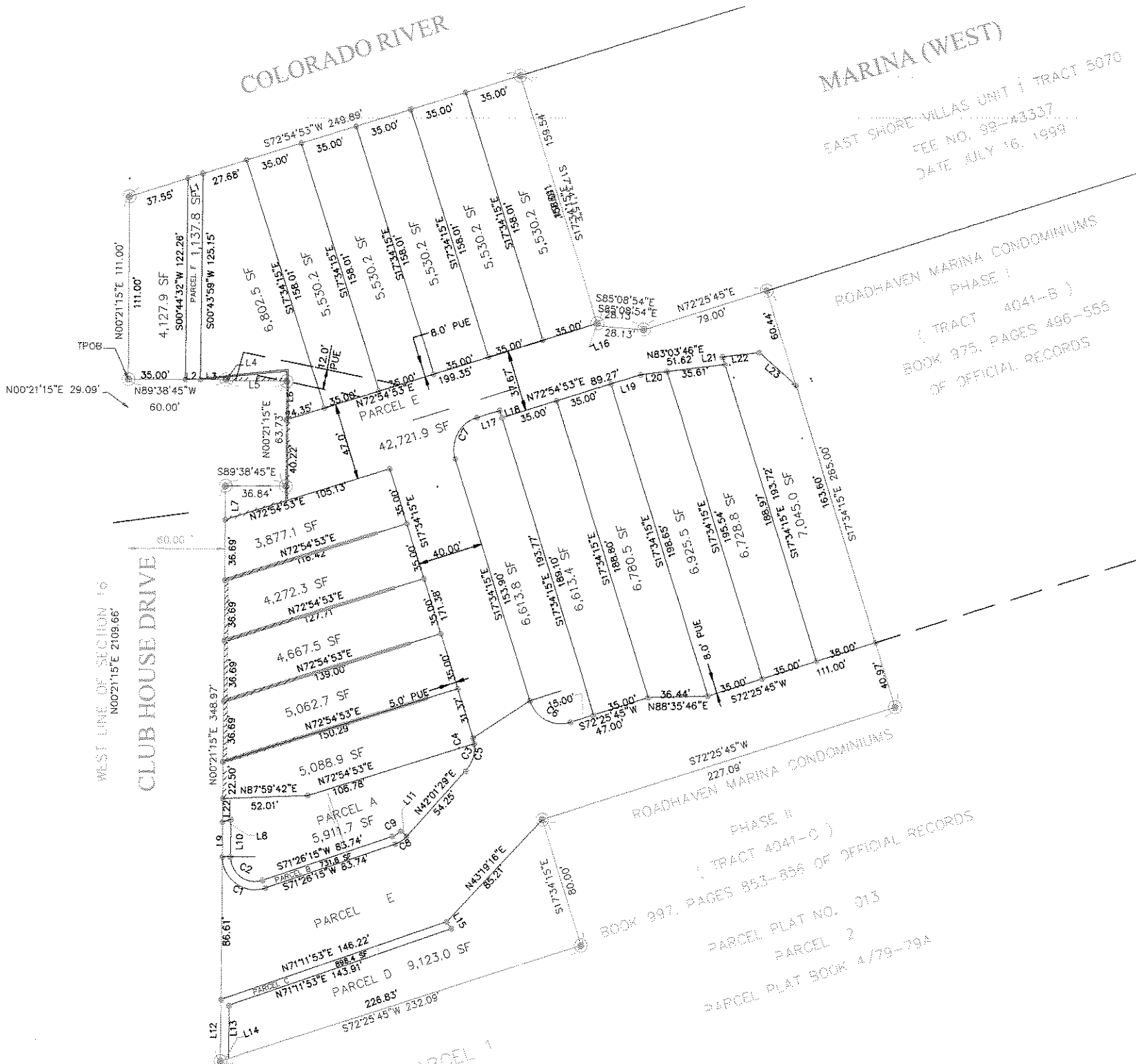
AREAS	
FIRST FLOOR	1852 SF
SECOND FLOOR	1852 SF
COVERED PATIO	180 SF
COVERED BALCONY	180 SF
GARAGE	804 SF

LOT 64
SCALE: 1/8" = 1'-0"

MARINA VILLAS
PRELIMINARY DRAWINGS NOT FOR CONSTRUCTION
PLANS ARE SUBJECT TO CHANGE

BILLHEAD CITY, ARIZONA
OCTOBER 19, 2004

HOLIDAY SHORES TRACT 133
FILE NO. 150925



COLORADO RIVER

MARINA (WEST)

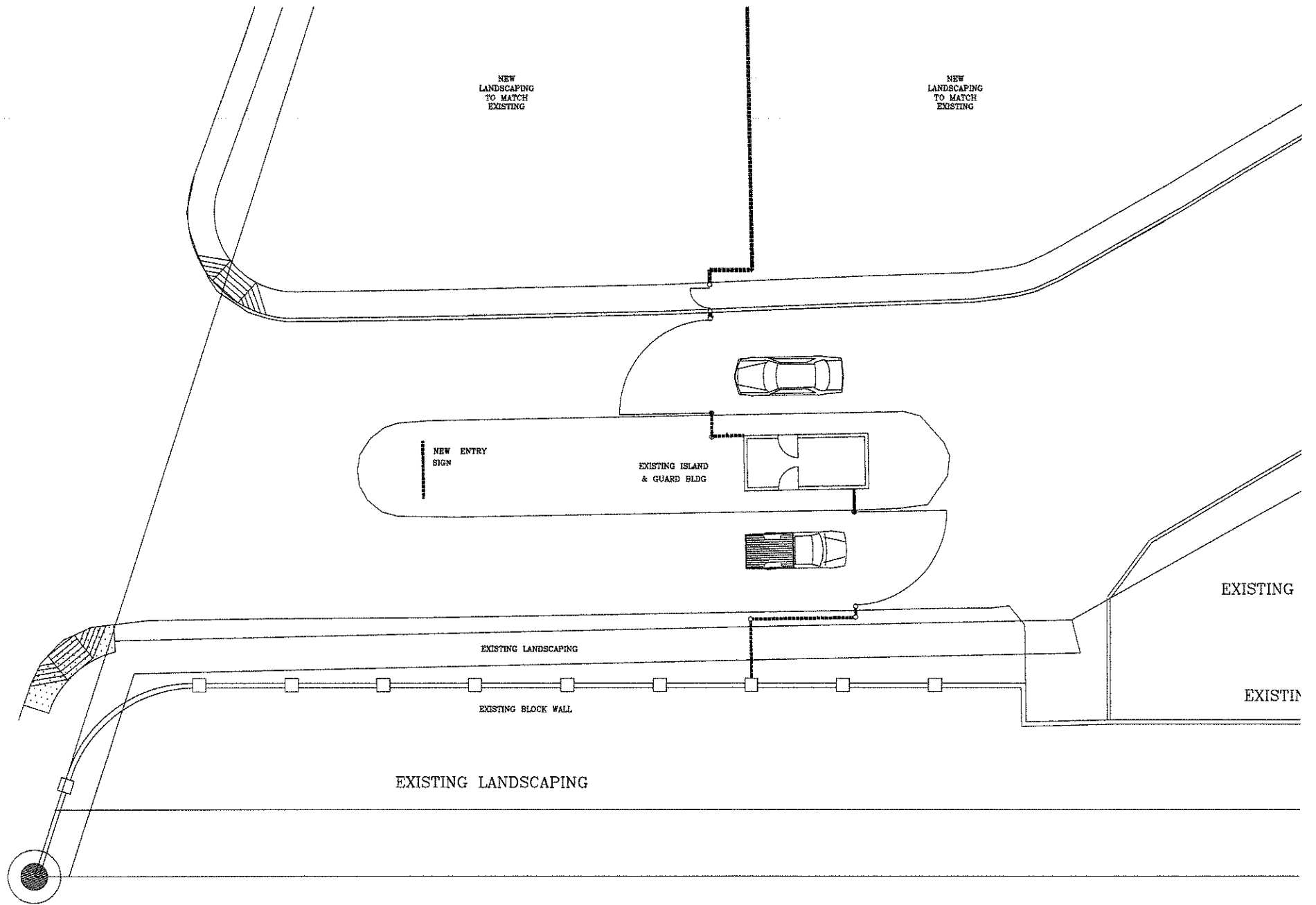
EAST SHORE WILLAS UNIT 1 TRACT 5070
FEE NO. 99-43337
DATE JULY 16, 1999

ROADHAVEN MARINA CONDOMINIUMS
PHASE I
(TRACT 4041-B)
BOOK 975, PAGES 496-555
OF OFFICIAL RECORDS

ROADHAVEN MARINA CONDOMINIUMS
PHASE II
(TRACT 4041-C)
BOOK 997, PAGES 853-856 OF OFFICIAL RECORDS
PARCEL PLAT NO. 013
PARCEL 2
PARCEL PLAT BOOK 4/79-79A

WEST LINE OF SECTION 10
N00°21'15"E 2109.66'
CLUBHOUSE DRIVE

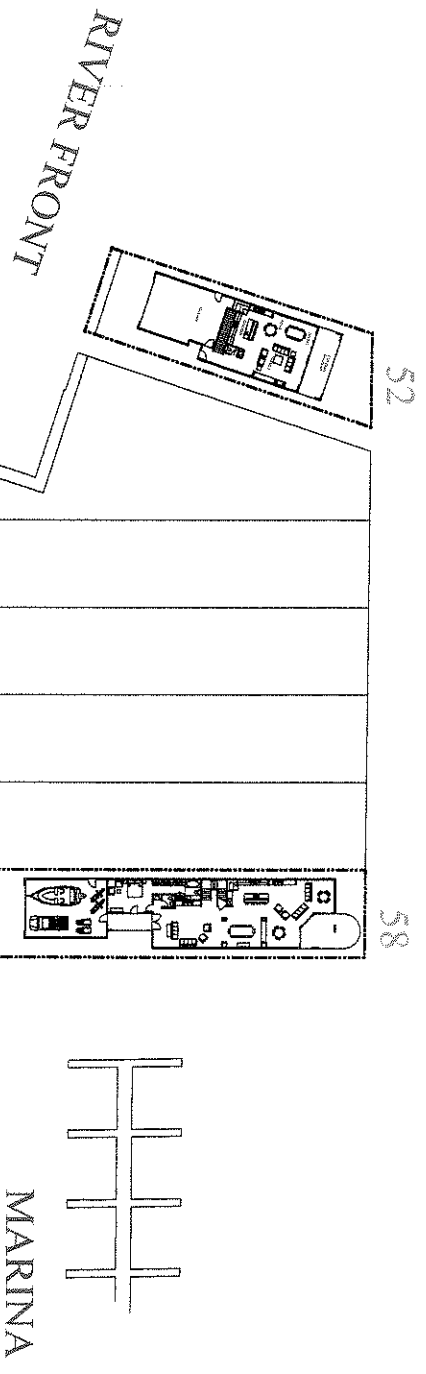
PARCEL 1



MARINA VILLAS ENTRY PLAN

SCALE: 1"=10'-0"

COLORADO RIVER



EL PALACIO PARKING

COUNTRY CLUB

LOT LAYOUTS MARINA VILLAS

JANUARY 1, 2008

PLANS ARE SUBJECT TO CHANGE

COLORADO RIVER

MARINA

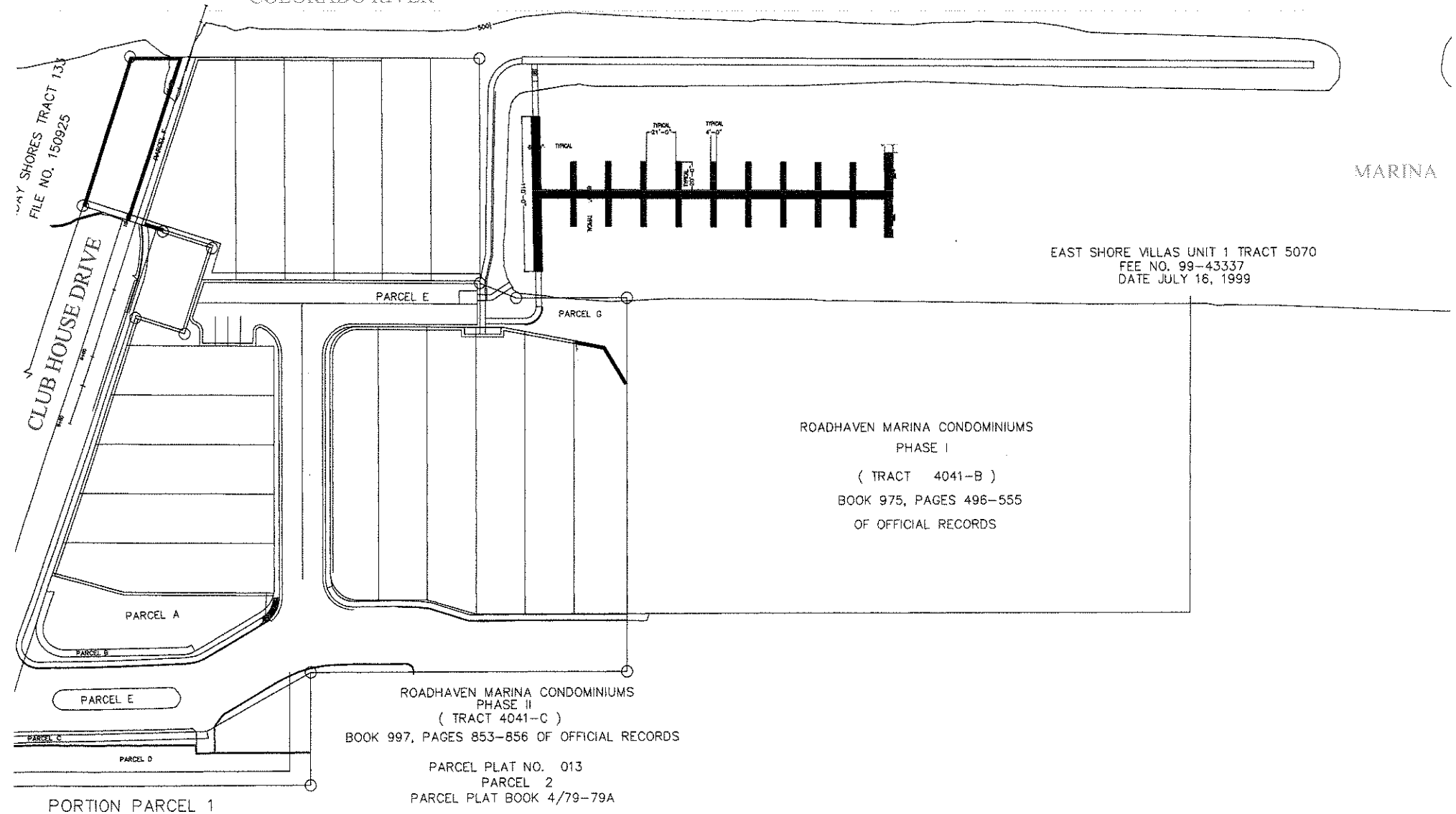
EAST SHORE VILLAS UNIT 1 TRACT 5070
FEE NO. 99-43337
DATE JULY 16, 1999

ROADHAVEN MARINA CONDOMINIUMS
PHASE I
(TRACT 4041-B)
BOOK 975, PAGES 496-555
OF OFFICIAL RECORDS

ROADHAVEN MARINA CONDOMINIUMS
PHASE II
(TRACT 4041-C)
BOOK 997, PAGES 853-856 OF OFFICIAL RECORDS

PARCEL PLAT NO. 013
PARCEL 2
PARCEL PLAT BOOK 4/79-79A

MARINA VILLA DOCKS



WAY SHORES TRACT 133
FILE NO. 150925

CLUB HOUSE DRIVE

PARCEL A

PARCEL B

PARCEL E

PARCEL C

PARCEL D

PORTION PARCEL 1

PARCEL E

PARCEL G

